



Wembley
Central
Offices



Ramsey House at Wembley Central

Modern office accommodation in the new heart of Wembley

Landmark town centre location with excellent transport links and amenities.
Approximately 23,000 square feet over 3 floors available.





The regeneration of Wembley brings significant new advantages for business

Ramsey House at Wembley Central forms an integral part of a £90m regeneration scheme taking place in the heart of Wembley town centre. Incorporating offices, retail, leisure, and high specification apartments, this landmark development provides a superbly convenient environment for business.

Wembley Central train station lies adjacent to Ramsey House, offering fast and frequent train services (Underground and mainline) to Central London (Euston, Baker Street, Oxford Circus) and to locations north (Harrow and Watford). There are excellent road links to the A206 North Circular, M1, M25 and M40 motorways.

Ramsey House offers a high quality managed environment, with a prominent office entrance set amongst new shops and amenities at Wembley Central. The town centre already provides a range of local and national retailers, restaurants and cafés. Wembley Stadium and Wembley Arena are within walking distance.

The building has undergone a comprehensive refurbishment, and provides contemporary office accommodation totalling 22,985 sq ft over 3 floors (2nd to 4th) offering the following specification:

- 24 hour on site security
- Comfort heating and cooling
- Solid floors with perimeter trunking
- Fully carpeted
- Suspended ceilings with recessed Cat II lighting
- Male and female toilets on each floor
- On site car parking

Amenities

- New public square
- Shops, restaurants and cafés
- Wembley Central train station
- Multi-storey car park



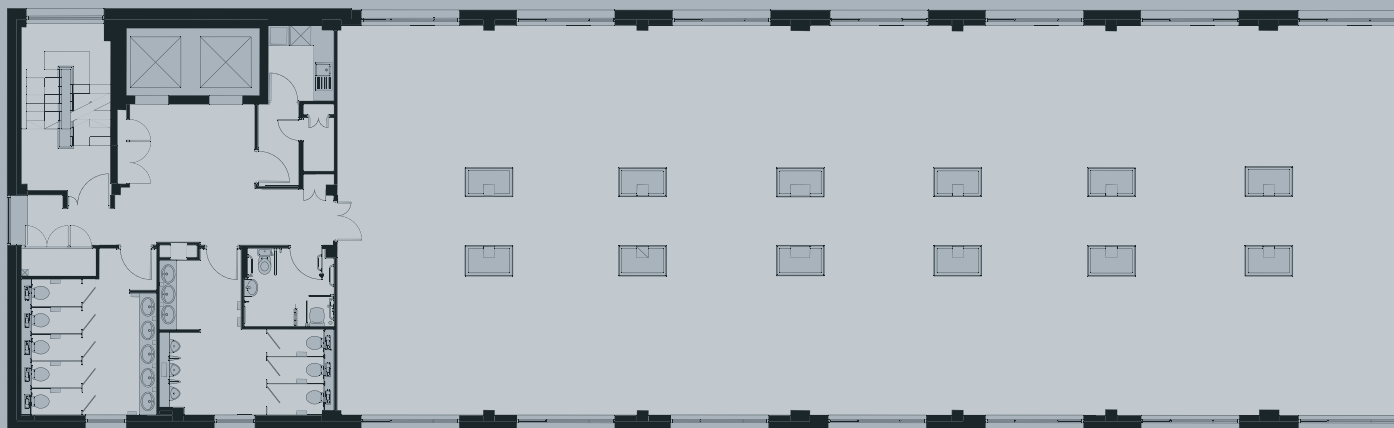
Ramsey House: 22,985 sq ft (2,135 sqm) of premium office accommodation over 3 floors

Approximate net internal floor areas:

Floor 2: 7,654 sq ft (711 sqm)

Floor 3: 7,673 sq ft (713 sqm)

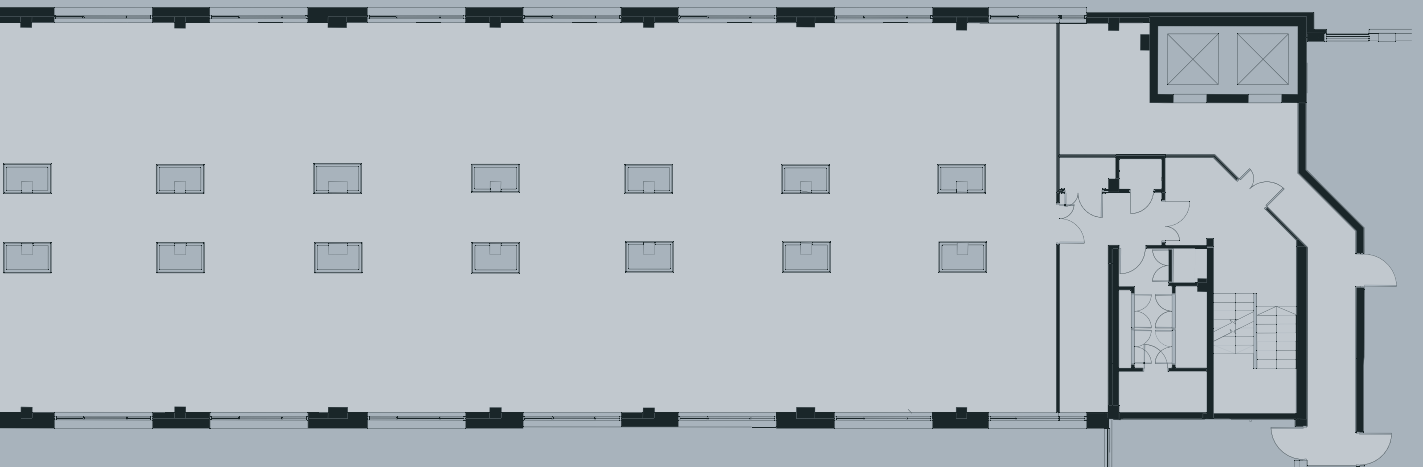
Floor 4: 7,658 sq ft (711 sqm)



Typical floor layout



Typical Interior at Ramsey House





Wembley Central
High Road, Wembley
Sat-nav. ref: HA9 7AF

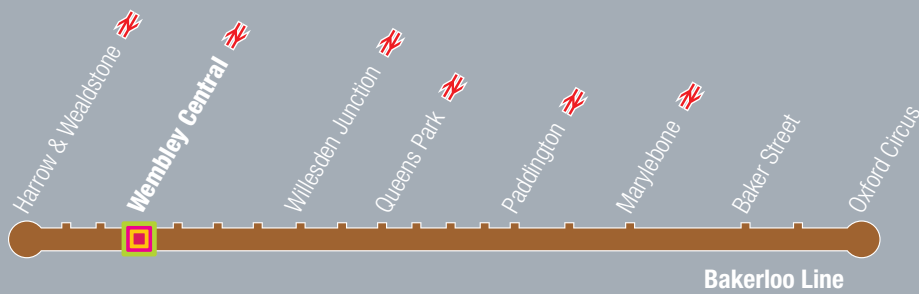
Travel times from Wembley Central

Wembley Central (tube/mainline)

Harrow & Wealdstone	8 mins
Clapham Junction	24 mins
Baker Street	26 mins
Euston	27 mins
Watford Junction	30 mins
Oxford Circus	32 mins

By road

A40	2.5 miles
M1	5 miles
Heathrow Airport	15 miles
Luton Airport	31 miles



or visit

www.wembley-central.co.uk

DTZ for themselves and for vendors or lessors of this property whose agents they are give notice that:

(i) The particulars are set out as a general outline only for the guidance of intended purchasers or lessees, and do not constitute, nor constitute part of, an offer or contract (ii) All descriptions, dimensions, references to condition and necessary permission for use and occupation, and other details are given without responsibility and any intending purchasers or tenants should not rely on them as statements or representations of fact but must satisfy themselves by inspection or otherwise as to the correctness of each of them. (iii) If for any reason an interested party wishes to rely on any aspect of the particulars or statement at any particular date without further investigation such interested party should seek direct written confirmation from DTZ. (iv) No person in the employment of DTZ has any authority to make or give any representation or warranty whatever in relation to this property. Compiled October 2008.

Sole Letting Agents



For information call our sole Letting Agents, DTZ

Tel: David Cuthbert 020 3296 2134
email: david.cuthbert@dtz.com

Tel: James Shillabeer 020 3296 2142
email: james.shillabeer@dtz.com



A joint venture regenerating Wembley Town Centre

